

Saginaw Valley Research and Extension Center Annual Research Tour, Tuesday, August 24th, 2010

Michigan State University Ag Experiment Station has a new 300 acre research farm located near Richville, which opened in April of 2009. An open house and research tour will be held emphasizing Sugarbeets, Dry Beans, and research on other Saginaw Valley crops. A new tour format will be implemented that includes the traditional wagon ride to the three crop specific locations, walking the research areas and an electrical farm safety demonstration. Tours will be of interest to farmers, businesses and anyone working in agriculture.

Agenda

**Registration 8 to 9 am — cost is \$15 per person.
Tours begin at 9 am — 45 minutes at each location**

#1 — Dry Edible Bean Research

- Row spacing
- Weed control
- Western bean cutworm
- Dry bean quality/breeding

#2 — Sugarbeet Research

- Sugarbeet breeding
- Sugarbeet disease
- Weed control
- Sugarbeet varieties

#3 — General Cropping Research

- Bio-energy crops
- Corn & crop nutrient management
- Soybean aphid resistant germ plasm
- Cucumber & melon research

**11:45 am — Thumb Electric Hotline
Safety Demonstration**

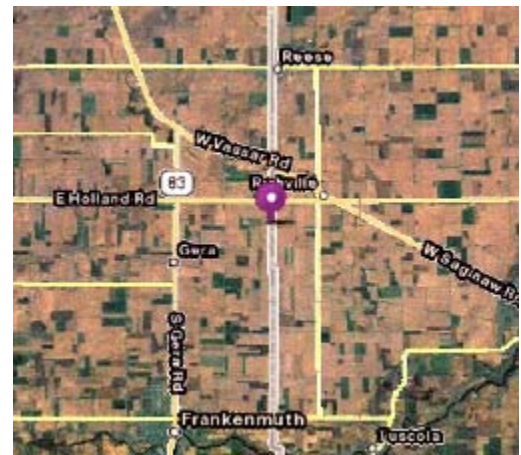
12:30 — Lunch

Location

**Map to Saginaw Valley Research
and Extension Center**

**3775 South Reese Road
Frankenmuth MI 48734-9772**

1 mile West of Richville on M-46
1/2 mile South on Reese Road



To expand research opportunities and improve grower access to research results, the Michigan Agricultural Experiment Station (MAES) relocated and renamed its field research station in the Saginaw Valley.

No pre-registration necessary!

New Convenience - PAY \$15 AT THE DOOR!

Approval pending for CCA and RUP credits

The registration table opens at 8 am. Please have your check payable to MSU Extension. The cost is \$15.00 per person and includes morning refreshments, lunch and all handouts.

The tour will begin promptly at 9am so arrive early to sign in, pick up your packet and get your coffee.

If you have any questions, feel free to call Steve or Nancy at 989-758-2500.

SAGINAW CO. MSU EXTENSION
ONE TUSCOLA ST., #100
SAGINAW MI 48607

PRSR STD
US POSTAGE PAID
ITHACA MI
PERMIT NO. 35

MSU is an affirmative action, equal opportunity employer.

THE 2010 Annual Research Tour
Tuesday, August 24th,
brought to you by these partners
who are committed to your agricultural success.



Here is a great opportunity to hear some of the latest research updates on crop research. Don't be left out! This important workshop is a bargain at \$15.00, which includes a catered lunch, transportation to 3 research sites and presentations by the finest researchers our sponsors have available.

ATTENTION!! Notice to all Farmers, Agribusinesses and others working in the agriculture field.
Annual Research Tour at the new
Saginaw Valley Research and Extension Center
3775 Reese Road, Frankenmuth MI 48734-9772
TUESDAY, AUGUST 24, 2010
Registration at 8 am—Tours promptly at 9 am